



Panel Interface Connectors

Port Adapters

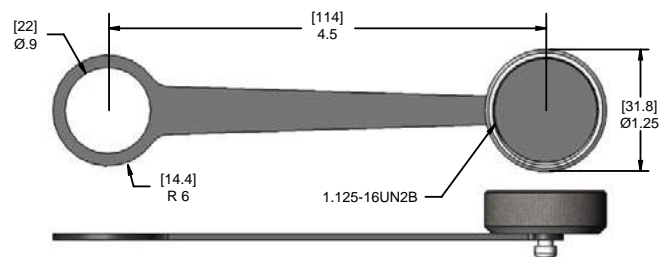
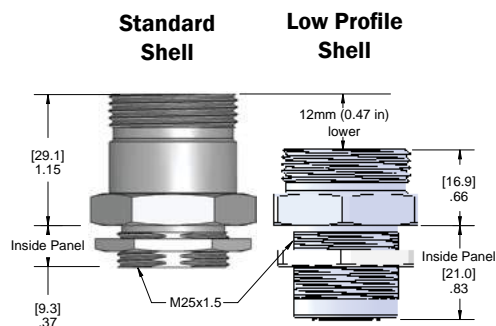


Single Port Shell | M25 Threads | Metal version | IP67 Rating

Our smallest Panel Interface Connectors are ideal for tight spaces. The anodized aluminum housing has a connector potted inside and can easily be mounted to a cabinet through a 1" diameter hole. The M25 mounting thread has an O-Ring and Lock Nut (not shown below). A cap is supplied with each unit to make them suitable for wash down.

Part Number	Description	Front	Back	Part Number	Description	Front	Back
D-USB-AFAF-M25	USB Female TYPE A to USB Female TYPE A			RJ45-M25	RJ45 Jack to RJ45 Jack		
D-USB-AFBF-M25	USB Female TYPE A to USB Female TYPE B			RJ11-M25	RJ11 Jack to RJ11 Jack		
D-USB-BFAF-M25	USB Female TYPE B to USB Female TYPE A			RJ22-M25	RJ22 Jack to RJ22 Jack		
D-USB-BFBF-M25	USB Female TYPE B to USB Female TYPE B			DM6-M25	6 PIN Female MINI-DIN to 6 PIN Female MINI-DIN		
BNC-M25	BNC Jack to BNC Jack			DM8-M25	8 PIN Female MINI-DIN to 8 PIN Female MINI-DIN		
D-FOPT-2-M25	2 Agilent HFBR Fiber Optic Adaptors			Panel Cutout			

Standard shell is anodized aluminum, for stainless steel shell add a “-SS” suffix. For low profile nickel plated brass shell, add a “-LP” suffix.



Sealing cap with tether supplied with each unit.
NBR tether also acts as gasket for sealing to panel.